

lifecycle

2012 BIO International
Convention
daily news

Massachusetts

»june18

TODAY in the MA Pavilion
Booth 0137

Exhibition & Booth Partnering Open
» Noon

Global Connect

International companies targeted for potential to build or grow a presence in Massachusetts are matched with state economic development agencies. *Visit the welcome desk to request a meeting.*

» 1–3 p.m.

BIO Legislator of the Year Awards

BIO honors Mass. legislators who have worked to improve our life sciences ecosystem.

» 3:30 p.m.

Pavilion Welcome: Celebrate the Patient

Visit the Pavilion to meet patients whose lives have been changed by medicines discovered, developed and manufactured in Massachusetts.

» 4 p.m.

Be sure to swing by the Pavilion from 3–3:30 p.m. or 4:30–5 p.m. for some of Airgas' homemade ice cream!

Massachusetts: better lives here

Welcome to Massachusetts, the place for the world's most cutting-edge research and discovery. As you spend some time in this year's MA Pavilion, you'll notice this isn't like any trade show exhibit you've ever seen.

This year, the individuals and organizations that make up the Mass. supercluster banded together to tell the story of our continued success in life sciences with stories from the people that fuel our industry and our quest for cures—the patients.

Explore Lifecycle Massachusetts. You'll see the faces of six patients smiling back at you from the walls of this year's exhibit. Take some time to read about how Kyle, Dave, Sandra, Tim, and sisters Laura and Cate have been touched by biotechnology. Join us at 4 p.m. today as we welcome some of those patients and advocates to the Lifecycle Stage to share their stories.

Don't miss a minute of Mass.-related Convention activity. Visit the Pavilion often,

as we have a full program and video lineup and lots of raffle prizes to give away each day. Follow us on Twitter with #MAPavilion and register for the Pavilion app at boston.com/MAPav for real-time updates and our official game.

Enjoy the Convention and your time here in Boston. We hope to see you again soon.

Robert K. Coughlin
President & CEO, MassBio



IPSEN'S AMBITION IS TO BECOME A LEADER IN SPECIALTY HEALTHCARE SOLUTIONS FOR TARGETED DEBILITATING DISEASES

- RAPIDLY TRANSLATE UNDERSTANDING OF DISEASE BIOLOGY INTO THERAPIES FOR UNMET PATIENT NEEDS
- CREATE DIFFERENTIATED SOLUTIONS CAPITALIZING ON OUR EXPERTISE IN PEPTIDES AND TOXINS
- SWIFTLY GROW AND EVOLVE IN OUR TARGETED AREAS (NEUROLOGY, ENDOCRINOLOGY, URO-ONCOLOGY, HEMOPHILIA) TO ALLOW GLOBAL ACCESS TO THERAPEUTIC SOLUTIONS
- FOSTER A CULTURE OF ACCOUNTABILITY, TEAM SPIRIT, RESULT ORIENTATION AND AGILITY

VISIT US AT WWW.IPSENUS.COM

Massachusetts is home to **300+** drug development companies and **800+** life sciences companies.

Mass.-headquartered companies account for **11%** of the drug development pipeline in the U.S. and **5%** worldwide.

50,555 Mass. biopharma employees in 2011 (that's **55%** growth since 2002).

Mass. institutions have received **\$23.1 billion** in NIH funding since 2002, including **\$2.5 billion** in 2011.

Venture capital investment for Mass. biotech companies reached an all-time high of **\$1.071 billion** in 2011. That's **23%** of all venture capital invested in biotech in the U.S.

Mass. has significant biologics manufacturing capacity—with **600,000** liters of mammalian cell culture in use and validation.

welcome to the MA Pavilion!

Massachusetts is excited to host the 2012 BIO International Convention and, on behalf of the Massachusetts Life Sciences Center (MLSC), I would like to welcome you to the Massachusetts Pavilion.

Four years ago, Mass. was a recognized leader in the life sciences, facing stiff domestic and international competition. Four years later, our state is *the* recognized leader in this field—in the U.S. and across the globe.

At the 2007 BIO International Convention, Gov. Deval Patrick proposed the Massachusetts Life Science Initiative (MLSI), a 10-year, \$1 billion investment to secure and strengthen our leadership in the life sciences. The initiative was passed by our state legislature and signed into law in June of 2008. The

MLSC is charged with the administration of this initiative.

To date, the MLSC has invested over \$300 million dollars from state

through the establishment of unique centers for research and development.

The Center has made major investments in stem cell research, personalized medicine, the development of new therapies for cancer and diabetes, and biomanufacturing.

Through these investments, we have created a strong innovation ecosystem in Mass. This unique ecosystem is what companies—large or small, international or domestic—seek to be part of. We have become the destination for international life sciences companies looking for the best place to locate a U.S. headquarters or subsidiary. Major global companies such as Pfizer, Sanofi and Merck/Serono are making strategic investments in our state.

This year's Convention is a chance to showcase all that Mass. has accomplished, as well as our vision for the future. Please come by to see us.

To learn more about the MLSI, visit the MA Pavilion Welcome Desk or our web site at masslifesciences.com.

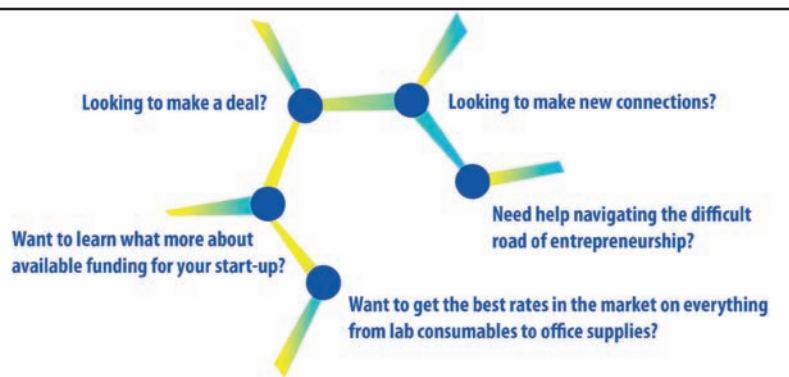


susan windham bannister



revenues and leveraged over \$938 million in third-party investment. The Center's investments are projected to create more than 8,750 jobs. Biopharma employment has grown 55 percent in Mass. since 2001, and these new jobs are not just for scientists. Most are in manufacturing, IT, sales and marketing and other fields.

Through our investments in scientific research and in early stage companies, the development of new therapies for osteoarthritis, ALS, Lupus, and sickle cell disease has been accelerated. Our infrastructure funding is producing scientific returns



Learn More or Join MassBio Today!



CONNECT WITH US

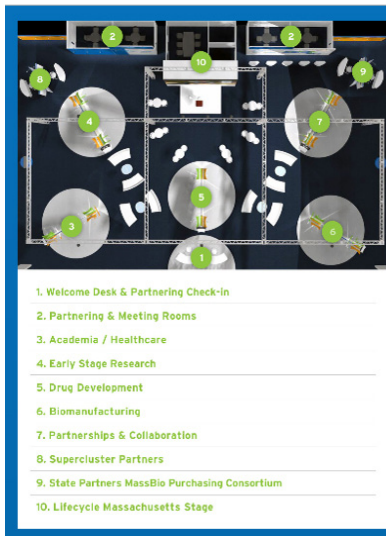


www.facebook.com/massbio
www.linkedin.com/massbio
www.twitter.com/massbio
www.youtube.com/massbio
www.massbiohq.org



get our app!

Visit boston.com/MAPav on your mobile phone to...



- » ...take a quiz! Answer correctly (using information found in the Pavilion) for a chance to win a **Pantech Element tablet from AT&T**
- » ...access our schedule of events and get late-breaking updates
- » ...join the #MAPavilion conversation on Twitter



Image: Colored scanning electron micrograph (SEM) of a lung cancer cell.

onco¹ology

focus

One focus: discovering and delivering breakthrough medicines to combat cancer.

Millennium: The Takeda Oncology Company is developing an extensive pipeline — among the top in oncology worldwide — with more than 17 compounds in development for a broad range of solid and hematological cancers.

Our pipeline — rich in novel compounds — includes multiple candidates that target seven disease pathways: protein homeostasis, anti-angiogenesis, growth-signaling inhibition, cell-cycle inhibition, apoptosis, immunomodulators and hormone regulation.

We are dedicated to a strong partnership with the oncology community. Together we can make a dramatic impact on cancer therapeutics over the next decade.

MILLENNIUM IS A PROUD MEMBER OF BIO AND MASS BIO.

To learn more, visit us at millennium.com.

©2012 Millennium Pharmaceuticals, Inc. All rights reserved.



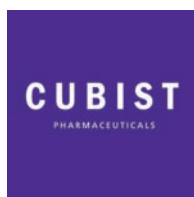


pavilion sponsor



welcome sponsors

host committee



pavilion partners plus

